

FED. ROAD DIST. NO.	STATE	PROJ. NO.	FISCAL YEAR	SHEET NO.	TOTAL SHEETS
	OKLA.				

DESCRIPTION	REVISIONS	DATE

NORTHWEST CORNER OF SECTION 4, T-25-N, R-17-E, I.M. FOUND A 1-1/2" PIPE AS CALLED FOR IN THE PLAT OF BOUNDARY SURVEY FOR THE OOLOGAH RESERVOIR BY W.R. MEEKS ON DECEMBER 23RD, 1964. SET THREE REFERENCES.

WEST QUARTER CORNER OF SECTION 4, T-25-N, R-17-E, I.M. SET A 3/8" IRON PIN W/CAP STAMPED "CA-1427" AND THREE REFERENCES. THIS POSITION WAS ESTABLISHED BY USING RECORD DISTANCES FROM A SECTION BREAKDOWN IN THE PLAT OF BOUNDARY SURVEY FOR THE OOLOGAH RESERVOIR BY W.R. MEEKS ON DECEMBER 23RD, 1964.

SOUTHWEST CORNER OF SECTION 4, T-25-N, R-17-E, I.M. FOUND 2" PIPE AS CALLED FOR IN THE PLAT OF BOUNDARY SURVEY FOR THE OOLOGAH RESERVOIR BY W.R. MEEKS ON DECEMBER 23RD, 1964. SET THREE REFERENCES.

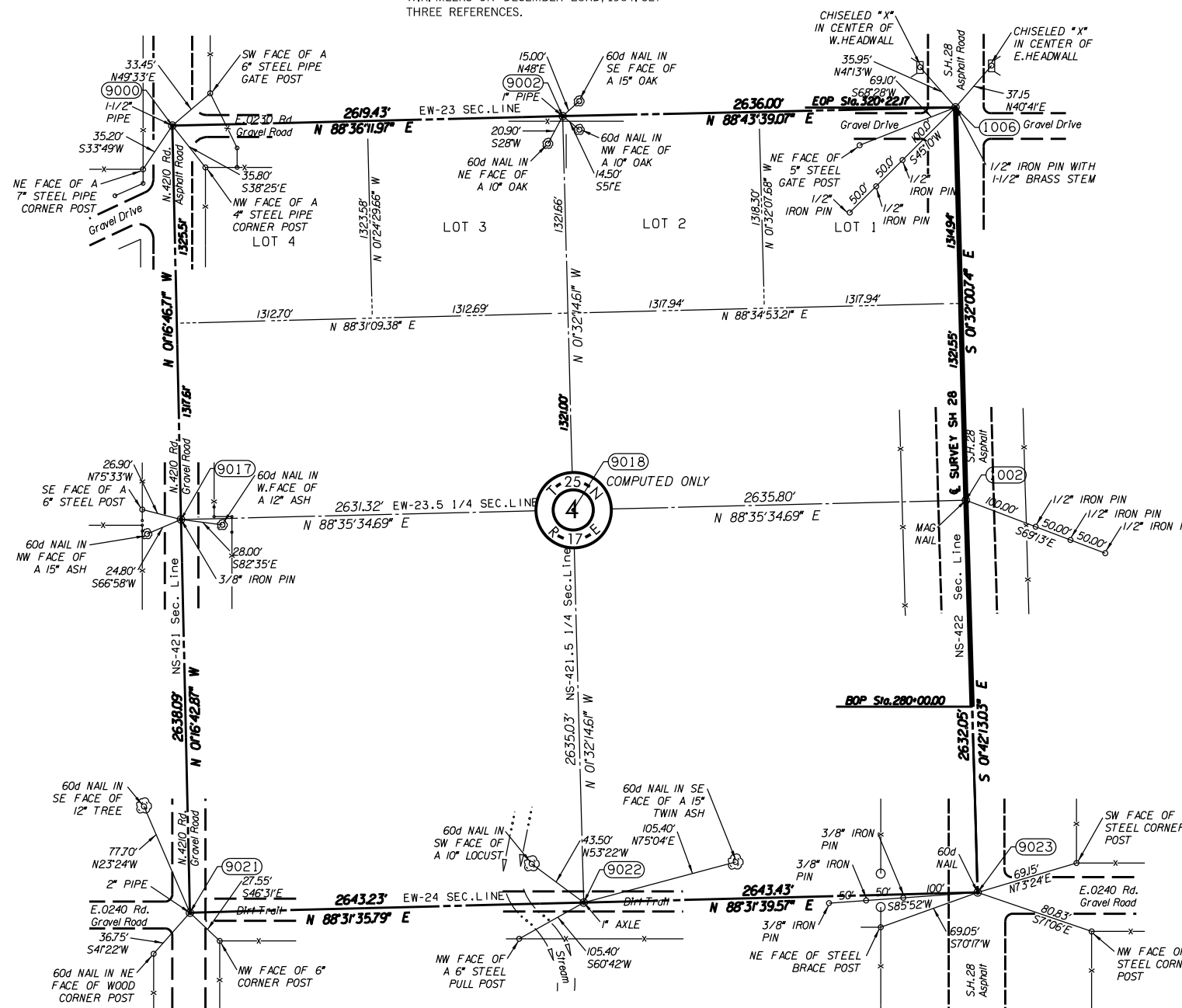
NORTH QUARTER CORNER OF SECTION 4, T-25-N, R-17-E, I.M. FOUND A 1" PIPE AS CALLED FOR IN THE PLAT OF BOUNDARY SURVEY FOR THE OOLOGAH RESERVOIR BY W.R. MEEKS ON DECEMBER 23RD, 1964. SET THREE REFERENCES.

NORTHEAST CORNER OF SECTION 4, T-25-N, R-17-E, I.M. FOUND A 1/2" IRON PIN WITH A 1-1/2" BRASS STEM SET BY PERSONS UNKNOWN. SET SIX REFERENCES.

EAST QUARTER CORNER OF SECTION 4, T-25-N, R-17-E, I.M. SET A MAG NAIL W/SHINER STAMPED "CA-1427" AND THREE REFERENCES. THIS POSITION WAS ESTABLISHED USING A COMBINATION OF RECORD PLANS AND LOCAL EVIDENCE. USING TIES TO THE SECTION CORNERS NORTH AND SOUTH OF THE POSITION RECORDED IN PLANS FAS NO. S-57(2) THE NORTHSOUTH POSITION WAS ESTABLISHED. IN THIS PLAN SET IT DEPICTS THE SECTION RUNNING THROUGH THE CENTER OF THE BRIDGE OVER SALT CREEK ROUGHLY 1000 FT. NORTH OF THE 1/4 POSITION. THE EASTWEST POSITION IS ESTABLISHED BY INTERSECTION OF A LINE RUNNING DUE WEST OF THE NORTHSOUTH POSITION AND A LINE RUNNING SOUTH FROM THE SECTION CORNER NORTH AND THE MIDPOINT OF THE BRIDGE.

SOUTHEAST CORNER OF SECTION 4, T-25-N, R-17-E, I.M. FOUND A 60d NAIL SET BY PERSONS UNKNOWN. SET SIX REFERENCES.

SOUTH QUARTER CORNER OF SECTION 4, T-25-N, R-17-E, I.M. FOUND A 1" AXLE AS CALLED FOR IN THE PLAT OF BOUNDARY SURVEY FOR THE OOLOGAH RESERVOIR BY W.R. MEEKS ON DECEMBER 23RD, 1964. SET THREE REFERENCES.



SCALE: 1" = 500'

NOTE: REFERENCES SHOWN ARE NOT TO SCALE

PLS	DMM	OKLAHOMA DEPARTMENT OF TRANSPORTATION SURVEY DIVISION
DRAWN	VKM	SURVEY DATA SHEET
CHECKED	CAC	
APPROVED	DMM	
CREW	GES, INC.	
		SWO 4851(1) PROJECT NO. 28857(04) SHEET NO. S009